



MUSEUM

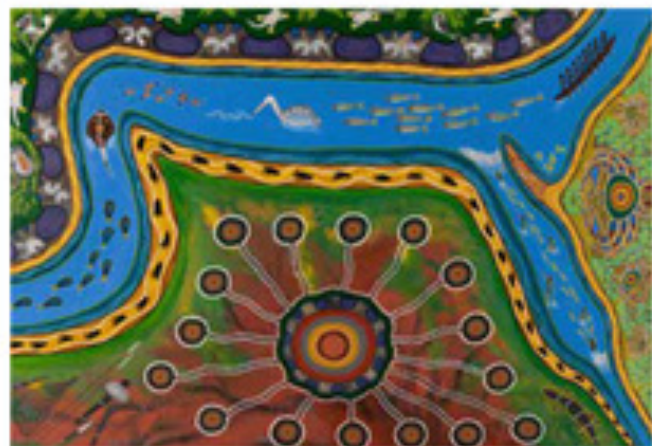
North Coast Regional Botanic Garden

GARLAMBIRLA PLANT WALK

Area 20 hectares
Scale 100m 200m



Start and finish the walk at the X
Follow the path line



The Old Camp - painting by Tony Hart

The North Coast Regional Botanic Garden acknowledges the traditional owners of this land, past and present. The Gumbaynggir Elders recognise that the spirits of the old people remain here still and care for this land.



North Coast
Regional Botanic
Garden

GARLAMBIRLA PLANT WALK

The Garlambirra Plant Walk

features endemic plants that were important resources for the Gumbaynggirr people.

In living memory, this site has been a significant area for Gumbaynggirr people. Most of the people lived at the 'old camp' now known as Fitzroy Oval. Uncle Tony's painting depicts the oval and Botanic Garden precinct as it was used by Gumbaynggirr people.

At the commencement of the Walk are tiles created by School students under the guidance of local elders. The tiles depict local flora and fauna with their Gumbaynggirr names.

The walk is 1.5kms long and follows the creek. Each Plant sign carries an image of 'The Old Camp'.

The paintings on each plaque are by Margaret Hodgson, the originals hang in the Display Room.

Blackbutt, *Eucalyptus pilularis*, ngandaamga: Thick, rough bark from the Blackbutt was used to make boats and houses.



Lomandra, *Lomandra logifolia*, bundaljin-gawgay: was used to make baskets and rope. The fleshy base of the stalk can be chewed for a starchy food.



Smooth barked apple, *Angophora costata*, jandayga: The red sap (keno) has good medicinal quality. The tree burls made great water coolamons.

Kangaroo Grass, *Themeda australis*, jugi-jugi: Jugi-jugi is good animal food with large edible seeds.



Wallum Beard-Heath, *leucopogon pimeoides*, nyam-nyam: The fruit is tiny but sweet and plentiful in spring and summer.

Pink Bloodwood, *Corymbia intermedia*, wuuban.ga: A very significant tree in Gumbaynggirr country: The red sap (keno) was used to help weeping skin wounds, the keno stopped the bleeding and the tannin has a healing property. Red bloodwood is also an important ceremonial tree for men. The tree that grows here is over 500 years old.



Swamp Water Fern, *Blechnum indicum*, gamiiny gliya-bading: Fern roots were gathered, partly dried in the sun, then roasted and pounded, the flour rolled into small balls and cooked on the coals (johnny cakes).



Grey Mangrove, *Avicennia marina* var. *australasica*, baru-baruga: The cobra worms found in mangrove logs, and the mangrove crabs were good sources of protein. The bark of large mangroves made good bark shields and coolamons.



Bracken Fern, *Pteridium esculentum*, gamiiny: The sap at the base of the stem was used as a medicine for bites and stings. All parts of the Bracken Fern are very poisonous, the fronds were used as a picnic blanket to keep the ants away.

Square leaved Grass Tree, *Xanthorrhoea johnsonii*, garraan.gurr jaagaga: Resin collected from a small cut in the trunk was used for joining axe-heads to handles; stalks used as fire rubbing sticks and fish spears. Nectar from the flowers (dip the stalk in drinking water). As a compass – moss always grows on the wouthern side and the flowers always come out on the northern side.

Coast Banksia, *Banksia integrifolia*, wurindaga: The cobs make great cooking fires, and fire can be carried in the cobs for a few days. Wood was used to make canoes. Flowers make copious nectar and soothe sore throats.



Black she-oak, *Allocasuarina littoralis*, nuluumga: An excellent timber tree for building a shingle roof, and popular for firewood.

Broad-leaved paperbark, *Melaleuca quinquinervia*, balawunga: Bark used to line baby carriers, baskets and coolamons, to thatch roofs, wrap injured limbs, (supportive and antiseptic), to wrap sharp axes and fish. Laid over meat on hot stones the bark keeps in heat and moisture. A 'calendar plant': when in flower the bearm are running and the possums are fat and sweet!

Creek Sandpaper Fig, *Ficus coronata*, gaagunya: Sandpapery leaves used to finish wooden tools, axes and spears. Delicious fruit!